



HP 2620 Switch Series

Data sheet

Product overview

The HP 2620 Switch Series consists of five switches with 10/100 connectivity. The HP 2620-24 Switch is a fanless switch with quiet operation, making it ideal for deployments in open spaces. The HP 2620-24-PPoE+ Switch, HP 2620-24-PoE+ Switch, and HP 2620-48-PoE+ Switch are IEEE 802.3af- and IEEE 802.3at-compliant switches and provide up to 30 W per powered port. The HP 2620-48 Switch has variable speed fans for quiet operation. All 2620 series switches include two 10/100/1000BASE-T ports and two SFP slots for Gigabit Ethernet uplink connectivity. An optional redundant external power supply is also available to provide redundancy in the event of a power supply failure. With IPv4/IPv6 static and RIP routing, robust security and management features, free lifetime warranty, and free software updates, the HP 2620 Switch Series is a cost-effective solution for customers who are building converged enterprise edge networks.

Key features

- Cost-effective access layer switches
- Lite Layer 3 IPv4/IPv6 static and RIP routing
- 30 W PoE+ support on PoE models
- Gigabit fiber uplinks
- Enterprise-class features



Features and benefits

Quality of Service (QoS)

- **Layer 4 prioritization:** enables prioritization based on TCP/UDP port numbers
- **Traffic prioritization (IEEE 802.1p):** allows real-time traffic classification into eight priority levels mapped to eight queues
- **Class of Service (CoS):** sets the IEEE 802.1p priority tag based on IP address, IP Type of Service (ToS), Layer 3 protocol, TCP/UDP port number, source port, and DiffServ
- **Rate limiting:** sets per-port ingress enforced maximums and per-port, per-queue guaranteed minimums

Connectivity

- **Auto-MDIX:** automatically adjusts for straight-through or crossover cables on all 10/100 and 10/100/1000 ports
- **IPv6:**
 - **IPv6 host:** allows the switches to be managed and deployed at the edge of an IPv6 network
 - **Dual stack (IPv4/IPv6):** provides a transition mechanism from IPv4 to IPv6; supports connectivity for both protocols
 - **MLD snooping:** forwards IPv6 multicast traffic to the appropriate interface; prevents IPv6 multicast traffic from flooding the network
- **IEEE 802.3af Power over Ethernet (PoE):** provides up to 15.4 W per port to IEEE 802.3af-compliant PoE-powered devices such as IP phones, wireless access points, and security cameras
- **IEEE 802.3at Power Over Ethernet Plus:** provides up to 30 W per port to IEEE 802.3 for PoE-/PoE+-powered devices such as video IP phones, IEEE 802.11n wireless access points, and advanced pan/tilt/zoom security cameras
- **Pre-standard PoE support:** detects and provides power to pre-standard PoE devices; see list of supported devices in the product FAQ at www.hp.com/networking/support
- **Single IP address management:** provides single IP address management for a virtual stack of up to 16 switches

Resiliency and high availability

- **External redundant power supply:** provides high reliability
- **IEEE 802.3ad Link Aggregation Protocol (LACP) and HP port trunking:** support up to 24 trunks, each with up to 8 links (ports) per trunk
- **IEEE 802.1s Multiple Spanning Tree:** provides high link availability in multiple VLAN environments by allowing multiple spanning trees

Manageability

- **Dual flash images:** provides independent primary and secondary operating system files for backup while upgrading
- **Friendly port names:** allow assignment of descriptive names to ports
- **Find-Fix-Inform:** finds and fixes common network problems automatically, then informs administrator
- **Multiple configuration files:** allow multiple configuration files to be stored to a flash image
- **Software updates:** free downloads from the Web
- **RMON, XRMON, and sFlow:** provide advanced monitoring and reporting capabilities for statistics, history, alarms, and events
- **Troubleshooting:** ingress and egress port monitoring enable network problem solving

Layer 2 switching

- **VLANs:** provide support for 512 VLANs and 4,094 VLAN IDs
- **Jumbo packet support:** supports up to 9220-byte frame size to improve the performance of large data transfers
- **IEEE 802.1v protocol VLANs:** isolate select non-IPv4 protocols automatically into their own VLANs

Layer 3 routing

- **Static IP routing:** provides manually configured routing; includes ECMP capability
- **Routing Information Protocol (RIP):** provides RIPv1 and RIPv2 routing

Security

- **Access control lists (ACLs):** provide IP Layer 3 filtering based on source/destination IP address/subnet and source/destination TCP/UDP port number
- **Source-port filtering:** allows only specified ports to communicate with each other
- **RADIUS/TACACS+:** eases switch management security administration by using a password authentication server
- **Secure Shell:** encrypts all transmitted data for secure remote CLI access over IP networks
- **Secure Sockets Layer (SSL):** encrypts all HTTP traffic, allowing secure access to the browser-based management GUI in the switch
- **Port security:** allows access only to specified MAC addresses, which can be learned or specified by the administrator
- **MAC address lockout:** prevents particular configured MAC addresses from connecting to the network
- **Secure FTP:** allows secure file transfer to and from the switch; protects against unwanted file downloads or unauthorized copying of a switch configuration file
- **Custom banner:** displays security policy when users log in to the switch
- **Identity-driven ACL:** enables implementation of a highly granular and flexible access security policy and VLAN assignment specific to each authenticated network user
- **STP BPDU port protection:** blocks Bridge Protocol Data Units (BPDUs) on ports that do not require BPDUs, preventing forged BPDU attacks
- **DHCP protection:** blocks DHCP packets from unauthorized DHCP servers, preventing denial-of-service attacks
- **Dynamic ARP protection:** blocks ARP broadcasts from unauthorized hosts, preventing eavesdropping or theft of network data

• Multiple user authentication methods:

- **IEEE 802.1X:** is an industry-standard method of user authentication using an IEEE 802.1X supplicant on the client in conjunction with a RADIUS server
 - **Web-based authentication:** similar to IEEE 802.1X, it provides a browser-based environment to authenticate clients that do not support the IEEE 802.1X supplicant
 - **MAC-based authentication:** client is authenticated with the RADIUS server based on the client's MAC address
- **STP Root Guard:** protects the root bridge from malicious attack or configuration mistakes
 - **Authentication flexibility:**
 - **Multiple IEEE 802.1X users per port:** provides authentication of multiple IEEE 802.1X users per port; prevents user "piggybacking" on another user's IEEE 802.1X authentication
 - **Concurrent IEEE 802.1X, Web, and MAC authentication schemes per port:** switch port will accept up to 32 sessions of IEEE 802.1X, Web, and MAC authentications
 - **Port mirroring for network threats:** provides sampled port traffic using sFlow technology to the HP Network Immunity Manager (NIM) application for Network Behavior Anomaly Detection (NBAD) analysis to detect threats and mitigate threats at the port where the threat originated
 - **Per-port broadcast throttling:** selectively configures broadcast control on heavy traffic port uplinks

Convergence

- **IP multicast snooping and data-driven IGMP:** automatically prevent flooding of IP multicast traffic
- **LLDP-MED (Media Endpoint Discovery):** is a standard extension of LLDP that stores values for parameters such as QoS and VLAN to automatically configure network devices such as IP phones
- **IEEE 802.1AB Link Layer Discovery Protocol (LLDP):** is an automated device discovery protocol that provides easy mapping of network management applications
- **PoE and PoE+ allocations:** support multiple methods (automatic, IEEE 802.3at dynamic, LLDP-MED fine grain, IEEE 802.3af device class, or user specified) to allocate and manage PoE/PoE+ power for more efficient energy savings

Monitor and diagnostics

- **Port mirroring:** enables traffic on a port to be simultaneously sent to a network analyzer for monitoring

Flexibility

- **Quiet operation:**
 - **Fanless design (2620-24 switch):** enables quiet operation for deployment in open spaces
 - **Variable-speed fans (2620-24-PPoE+, 2620-24-PoE+, 2620-48, and 2620-48-PoE+ switches):** improve fan speed for the operating environment while keeping noise and energy consumption levels to a minimum
- **Flexible mounting:**
 - **Rackable:** can be mounted in a standard 19-inch rack using included hardware
 - **Surface mountable:** can be mounted above or below a surface (such as on a desk or table) using included hardware

Warranty and support

- **Lifetime warranty:** for as long as you own the product with advance replacement and next-business-day delivery (available in most countries)*
- **Electronic and telephone support:** limited electronic and telephone support is available from HP; refer to www.hp.com/networking/warranty for details on the support provided and the period during which support is available
- **Software releases:** refer to www.hp.com/networking/warranty for details on the software releases provided and the period during which software releases are available for your product(s)

*Hardware warranty replacement for as long as you own the product, with next business day advance replacement (available in most countries) with a five-year hardware warranty replacement for the disk drive included with HP AllianceONE Services z1 Module, HP Threat Management Services z1 Module, HP PCM+ Agent with AllianceONE Services z1 Module, and HP MSM765 z1 Mobility Controller. For details, refer to the HP Software License, Warranty, and Support booklet at www.hp.com/networking/warranty.

HP 2620 Switch Series

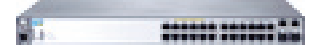
Specifications



HP 2620-24 Switch (J9623A)



HP 2620-24-PoE+ Switch (J9624A)



HP 2620-24-PoE+ Switch (J9625A)

Ports	<p>24 autosensing 10/100 ports (IEEE 802.3 Type 10BASE-T, IEEE 802.3u Type 100BASE-TX); Media Type: Auto-MDIX; Duplex: half or full</p> <p>1 RJ-45 serial console port</p> <p>2 autosensing 10/100/1000 ports (IEEE 802.3 Type 10BASE-T, IEEE 802.3u Type 100BASE-TX, IEEE 802.3ab Type 1000BASE-T); Duplex: 10BASE-T/100BASE-TX: half or full; 1000BASE-T: full only</p> <p>2 open mini-GBIC (SFP) slots</p>	<p>12 RJ-45 autosensing 10/100 ports (IEEE 802.3 Type 10BASE-T, IEEE 802.3u Type 100BASE-TX); Media Type: Auto-MDIX; Duplex: half or full</p> <p>12 RJ-45 autosensing 10/100 PoE+ ports (IEEE 802.3 Type 10BASE-T, IEEE 802.3u Type 100BASE-TX, IEEE 802.3at PoE+); Duplex: half or full</p> <p>1 RJ-45 serial console port</p> <p>2 autosensing 10/100/1000 ports (IEEE 802.3 Type 10BASE-T, IEEE 802.3u Type 100BASE-TX, IEEE 802.3ab Type 1000BASE-T); Duplex: 10BASE-T/100BASE-TX: half or full; 1000BASE-T: full only</p> <p>2 open mini-GBIC (SFP) slots</p>	<p>24 RJ-45 autosensing 10/100 PoE+ ports (IEEE 802.3 Type 10BASE-T, IEEE 802.3u Type 100BASE-TX, IEEE 802.3at PoE+); Media Type: Auto-MDIX; Duplex: half or full</p> <p>1 RJ-45 serial console port</p> <p>2 autosensing 10/100/1000 ports (IEEE 802.3 Type 10BASE-T, IEEE 802.3u Type 100BASE-TX, IEEE 802.3ab Type 1000BASE-T); Duplex: 10BASE-T/100BASE-TX: half or full; 1000BASE-T: full only</p> <p>2 open mini-GBIC (SFP) slots</p>
Physical characteristics			
Dimensions	10(d) x 17.44(w) x 1.73(h) in. (25.4 x 44.3 x 4.39 cm) (1U height)	10(d) x 17.44(w) x 1.73(h) in. (25.4 x 44.3 x 4.39 cm) (1U height)	14.5(d) x 17.44(w) x 1.73(h) in. (36.83 x 44.3 x 4.39 cm) (1U height)
Weight	5.7 lb. (2.59 kg), Fully loaded	7.04 lb. (3.19 kg)	10.67 lb. (4.84 kg), Fully loaded
Memory and processor			
Processor	PowerPC FreeScale 8313 @ 400 MHz, 512 MB flash, 512 MB SDRAM, 4 MB flash ROM; packet buffer size: 1 MB	PowerPC FreeScale 8313 @ 400 MHz, 512 MB flash, 512 MB SDRAM, 4 MB flash ROM; packet buffer size: 1 MB	Power PC FreeScale 8313 @ 400 MHz, 512 MB flash, 512 MB SDRAM, 4 MB flash ROM; packet buffer size: 1 MB
Mounting	Mounts in an EIA-standard 19 in. telco rack or equipment cabinet (hardware included); horizontal surface mounting only	Mounts in an EIA-standard 19 in. telco rack or equipment cabinet (hardware included); horizontal surface mounting only	Mounts in an EIA-standard 19 in. telco rack or equipment cabinet (hardware included); horizontal surface mounting only
Performance			
100 Mb Latency	IPv6 Ready Certified < 8.3 μs (LIFO 64-byte packets)	IPv6 Ready Certified < 8.3 μs (LIFO 64-byte packets)	IPv6 Ready Certified < 8.3 μs (LIFO)
1000 Mb Latency	< 2.9 μs (LIFO 64-byte packets)	< 2.9 μs (LIFO 64-byte packets)	< 2.9 μs (LIFO)
Throughput	up to 9.5 million pps	up to 9.5 million pps	up to 9.5 million pps
Routing/Switching capacity	12.8 Gbps	12.8 Gbps	12.8 Gbps
MAC address table size	16000 entries	16000 entries	16000 entries
Environment			
Operating temperature	32°F to 131°F (0°C to 55°C)	32°F to 131°F (0°C to 55°C)	32°F to 131°F (0°C to 55°C)
Operating relative humidity	15% to 95% @ 104°F (40°C), noncondensing	15% to 95% @ 104°F (40°C), noncondensing	15% to 95% @ 104°F (40°C), noncondensing
Nonoperating/Storage temperature	-40°F to 158°F (-40°C to 70°C)	-40°F to 158°F (-40°C to 70°C)	-40°F to 158°F (-40°C to 70°C)
Nonoperating/Storage relative humidity	15% to 90% @ 149°F (65°C), noncondensing	15% to 90% @ 149°F (65°C), noncondensing	15% to 90% @ 149°F (65°C), noncondensing
Altitude	up to 10,000 ft. (3 km)	up to 10,000 ft. (3 km)	up to 10,000 ft. (3 km)
Acoustic	Power: 0 dB, Pressure: 0 dB No Fan	Power: 37.1 dB, Pressure: 25.9 dB	Power: 34.0 dB, Pressure: 29.7 dB
Electrical characteristics			
	Achieved Miercom Certified Green Award	Achieved Miercom Certified Green Award	Achieved Miercom Certified Green Award
Voltage	100-127/200-240 VAC	100-127/200-240 VAC	100-127/200-240 VAC
Idle power	13.3 W	22.0 W	22.8 W
Maximum power rating	22.1 W	165.8 W	428.0 W
PoE power	0 W	128 W	382 W
Frequency	50/60 Hz	50/60 Hz	50/60 Hz
Notes	Idle power is the actual power consumption of the device with no ports connected. Maximum power rating and maximum heat dissipation are the worst-case theoretical maximum numbers provided for planning the infrastructure with fully loaded PoE (if equipped), 100% traffic, all ports plugged in, and all modules populated. PoE power is the power supplied by the internal power supply. It is dependent on the type and quantity of power supplies and may be supplemented with the use of an external power supply (EPS).	Idle power is the actual power consumption of the device with no ports connected. Maximum power rating and maximum heat dissipation are the worst-case theoretical maximum numbers provided for planning the infrastructure with fully loaded PoE (if equipped), 100% traffic, all ports plugged in, and all modules populated. PoE power is the power supplied by the internal power supply. It is dependent on the type and quantity of power supplies and may be supplemented with the use of an external power supply (EPS).	Idle power is the actual power consumption of the device with no ports connected. Maximum power rating and maximum heat dissipation are the worst-case theoretical maximum numbers provided for planning the infrastructure with fully loaded PoE (if equipped), 100% traffic, all ports plugged in, and all modules populated. PoE power is the power supplied by the internal power supply. It is dependent on the type and quantity of power supplies and may be supplemented with the use of an external power supply (EPS).
Safety	EN 60950/IEC 60950; CAN/CSA 22.2 No. 60950; EN 60825; UL 60950	EN 60950/IEC 60950; CAN/CSA 22.2 No. 60950; EN 60825; UL 60950	EN 60950/IEC 60950; CAN/CSA 22.2 No. 60950; EN 60825; UL 60950
Emissions	FCC Class A; VCCI Class A; EN 55022/CISPR 22 Class A	FCC Class A; VCCI Class A; EN 55022/CISPR 22 Class A	FCC Class A; VCCI Class A; EN 55022/CISPR 22 Class A

HP 2620 Switch Series

Specifications (continued)

	HP 2620-24 Switch (J9623A)	HP 2620-24-PoE+ Switch (J9624A)	HP 2620-24-PoE+ Switch (J9625A)
Immunity			
EN	EN 55024, CISPR 24	EN 55024, CISPR 24	EN 55024, CISPR 24
ESD	IEC 61000-4-2	IEC 61000-4-2	IEC 61000-4-2
Radiated	IEC 61000-4-3	IEC 61000-4-3	IEC 61000-4-3
EFT/Burst	IEC 61000-4-4	IEC 61000-4-4	IEC 61000-4-4
Surge	IEC 61000-4-5	IEC 61000-4-5	IEC 61000-4-5
Conducted	IEC 61000-4-6	IEC 61000-4-6	IEC 61000-4-6
Power frequency magnetic field	IEC 61000-4-8	IEC 61000-4-8	IEC 61000-4-8
Voltage dips and interruptions	IEC 61000-4-11	IEC 61000-4-11	IEC 61000-4-11
Harmonics	EN 61000-3-2, IEC 61000-3-2	EN 61000-3-2, IEC 61000-3-2	EN 61000-3-2, IEC 61000-3-2
Flicker	EN 61000-3-3, IEC 61000-3-3	EN 61000-3-3, IEC 61000-3-3	EN 61000-3-3, IEC 61000-3-3
Management	command-line interface; Web browser; Telnet	command-line interface; Web browser; Telnet	command-line interface; Web browser; Telnet
Services	3-year, 4-hour onsite, 13x5 coverage for hardware (HS980E) 3-year, 4-hour onsite, 24x7 coverage for hardware (HS982E) 3-year, 4-hour onsite, 24x7 coverage for hardware, 24x7 SW phone support and SW updates (HS987E) 3-year, 24x7 SW phone support, software updates (HS986E) Installation with minimum configuration, system-based pricing (U4826E) Installation with HP-provided configuration, system-based pricing (U4830E) 4-year, 4-hour onsite, 13x5 coverage for hardware (HS990E) 4-year, 4-hour onsite, 24x7 coverage for hardware (HS992E) 4-year, 4-hour onsite, 24x7 coverage for hardware, 24x7 software phone (HS997E) 4-year, 24x7 SW phone support, software updates (HS996E) 5-year, 4-hour onsite, 13x5 coverage for hardware (HT001E) 5-year, 4-hour onsite, 24x7 coverage for hardware (HT003E) 5-year, 4-hour onsite, 24x7 coverage for hardware, 24x7 software phone (HT008E) 5-year, 24x7 SW phone support, software updates (HT007E) 3 Yr 6 hr Call-to-Repair Onsite (HS984E) 4 Yr 6 hr Call-to-Repair Onsite (HS994E) 5 Yr 6 hr Call-to-Repair Onsite (HT005E) 1-year, 4-hour onsite, 13x5 coverage for hardware (HS970E) 1-year, 4-hour onsite, 24x7 coverage for hardware (HS972E) 1-year, 6 hour Call-To-Repair Onsite for hardware (HS974E) 1-year, 24x7 software phone support, software updates (HS976E) 1-year, 4-hour onsite, 24x7 coverage for hardware, 24x7 software phone support and software updates (HS977E) 1-year, 24x7 software phone support, software updates + Next Business Day Hardware Exchange (HS968E) 1-year, 24x7 software phone support, software updates + 4 hour hardware exchange (HS969E) 3-year, 24x7 software phone support, software updates + Next Business Day Hardware Exchange (HS978E) 3-year, 24x7 software phone support, software updates + 4 hour Hardware Exchange (HS979E)	3-year, 4-hour onsite, 13x5 coverage for hardware (HS980E) 3-year, 4-hour onsite, 24x7 coverage for hardware (HS982E) 3-year, 4-hour onsite, 24x7 coverage for hardware, 24x7 SW phone support and SW updates (HS987E) 3-year, 24x7 SW phone support, software updates (HS986E) Installation with minimum configuration, system-based pricing (U4826E) Installation with HP-provided configuration, system-based pricing (U4830E) 4-year, 4-hour onsite, 13x5 coverage for hardware (HS990E) 4-year, 4-hour onsite, 24x7 coverage for hardware (HS992E) 4-year, 4-hour onsite, 24x7 coverage for hardware, 24x7 software phone (HS997E) 4-year, 24x7 SW phone support, software updates (HS996E) 5-year, 4-hour onsite, 13x5 coverage for hardware (HT001E) 5-year, 4-hour onsite, 24x7 coverage for hardware (HT003E) 5-year, 4-hour onsite, 24x7 coverage for hardware, 24x7 software phone (HT008E) 5-year, 24x7 SW phone support, software updates (HT007E) 3 Yr 6 hr Call-to-Repair Onsite (HS984E) 4 Yr 6 hr Call-to-Repair Onsite (HS994E) 5 Yr 6 hr Call-to-Repair Onsite (HT005E) 1-year, 4-hour onsite, 13x5 coverage for hardware (HS970E) 1-year, 4-hour onsite, 24x7 coverage for hardware (HS972E) 1-year, 6 hour Call-To-Repair Onsite for hardware (HS974E) 1-year, 24x7 software phone support, software updates (HS976E) 1-year, 4-hour onsite, 24x7 coverage for hardware, 24x7 software phone support and software updates (HS977E) 1-year, 24x7 software phone support, software updates + Next Business Day Hardware Exchange (HS968E) 1-year, 24x7 software phone support, software updates + 4 hour hardware exchange (HS969E) 3-year, 24x7 software phone support, software updates + Next Business Day Hardware Exchange (HS978E) 3-year, 24x7 software phone support, software updates + 4 hour Hardware Exchange (HS979E)	3-year, 4-hour onsite, 13x5 coverage for hardware (HS980E) 3-year, 4-hour onsite, 24x7 coverage for hardware (HS982E) 3-year, 4-hour onsite, 24x7 coverage for hardware, 24x7 SW phone support and SW updates (HS987E) 3-year, 24x7 SW phone support, software updates (HS986E) Installation with minimum configuration, system-based pricing (U4826E) Installation with HP-provided configuration, system-based pricing (U4830E) 4-year, 4-hour onsite, 13x5 coverage for hardware (HS990E) 4-year, 4-hour onsite, 24x7 coverage for hardware (HS992E) 4-year, 4-hour onsite, 24x7 coverage for hardware, 24x7 software phone (HS997E) 4-year, 24x7 SW phone support, software updates (HS996E) 5-year, 4-hour onsite, 13x5 coverage for hardware (HT001E) 5-year, 4-hour onsite, 24x7 coverage for hardware (HT003E) 5-year, 4-hour onsite, 24x7 coverage for hardware, 24x7 software phone (HT008E) 5-year, 24x7 SW phone support, software updates (HT007E) 3 Yr 6 hr Call-to-Repair Onsite (HS984E) 4 Yr 6 hr Call-to-Repair Onsite (HS994E) 5 Yr 6 hr Call-to-Repair Onsite (HT005E) 1-year, 4-hour onsite, 13x5 coverage for hardware (HS970E) 1-year, 4-hour onsite, 24x7 coverage for hardware (HS972E) 1-year, 6 hour Call-To-Repair Onsite for hardware (HS974E) 1-year, 24x7 software phone support, software updates (HS976E) 1-year, 4-hour onsite, 24x7 coverage for hardware, 24x7 software phone support and software updates (HS977E) 1-year, 24x7 software phone support, software updates + Next Business Day Hardware Exchange (HS968E) 1-year, 24x7 software phone support, software updates + 4 hour hardware exchange (HS969E) 3-year, 24x7 software phone support, software updates + Next Business Day Hardware Exchange (HS978E) 3-year, 24x7 software phone support, software updates + 4 hour Hardware Exchange (HS979E)

Specifications (continued)

	HP 2620-24 Switch (J9623A)	HP 2620-24-PPoE+ Switch (J9624A)	HP 2620-24-PoE+ Switch (J9625A)
	<p>4-year, 24x7 software phone support, software updates + Next Business Day Hardware Exchange (HS988E)</p> <p>4-year, 24x7 software phone support, software updates + 4 hour Hardware Exchange (HS989E)</p> <p>5-year, 24x7 software phone support, software updates + Next Business Day Hardware Exchange (HS998E)</p> <p>5-year, 24x7 software phone support, software updates + 4 hour Hardware Exchange (HS999E)</p> <p>Refer to the HP website at www.hp.com/networking/services for details on the service-level descriptions and product numbers. For details about services and response times in your area, please contact your local HP sales office.</p>	<p>4-year, 24x7 software phone support, software updates + Next Business Day Hardware Exchange (HS988E)</p> <p>4-year, 24x7 software phone support, software updates + 4 hour Hardware Exchange (HS989E)</p> <p>5-year, 24x7 software phone support, software updates + Next Business Day Hardware Exchange (HS998E)</p> <p>5-year, 24x7 software phone support, software updates + 4 hour Hardware Exchange (HS999E)</p> <p>Refer to the HP website at www.hp.com/networking/services for details on the service-level descriptions and product numbers. For details about services and response times in your area, please contact your local HP sales office.</p>	<p>4-year, 24x7 software phone support, software updates + Next Business Day Hardware Exchange (HS988E)</p> <p>4-year, 24x7 software phone support, software updates + 4 hour Hardware Exchange (HS989E)</p> <p>5-year, 24x7 software phone support, software updates + Next Business Day Hardware Exchange (HS998E)</p> <p>5-year, 24x7 software phone support, software updates + 4 hour Hardware Exchange (HS999E)</p> <p>Refer to the HP website at www.hp.com/networking/services for details on the service-level descriptions and product numbers. For details about services and response times in your area, please contact your local HP sales office.</p>
<p>Standards and protocols (applies to all products in series)</p>	<p>Device management RFC 1591 DNS (client) HTML and telnet management</p>	<p>IPv6 RFC 1981 IPv6 Path MTU Discovery RFC 2460 IPv6 Specification RFC 2710 Multicast Listener Discovery (MLD) for IPv6 RFC 2925 Remote Operations MIB (Ping only) RFC 3019 MLDv1 MIB RFC 3315 DHCPv6 (client only) RFC 3513 IPv6 Addressing Architecture RFC 3596 DNS Extension for IPv6 RFC 3810 Multicast Listener Discovery Version 2 (MLDv2) for IPv6 RFC 4022 MIB for TCP RFC 4113 MIB for UDP RFC 4251 SSHv6 Architecture RFC 4252 SSHv6 Authentication RFC 4253 SSHv6 Transport Layer RFC 4254 SSHv6 Connection RFC 4293 MIB for IP RFC 4419 Key Exchange for SSH RFC 4443 ICMPv6 RFC 4541 IGMP & MLD Snooping Switch RFC 4861 IPv6 Neighbor Discovery RFC 4862 IPv6 Stateless Address Auto-configuration</p>	<p>RFC 2863 The Interfaces Group MIB RFC 2925 Ping MIB</p>
	<p>General protocols IEEE 802.1D MAC Bridges IEEE 802.1p Priority IEEE 802.1Q VLANs IEEE 802.1s Multiple Spanning Trees IEEE 802.1v VLAN classification by Protocol and Port IEEE 802.1w Rapid Reconfiguration of Spanning Tree IEEE 802.3ad Link Aggregation Control Protocol (LACP) IEEE 802.3x Flow Control RFC 768 UDP RFC 783 TFTP Protocol (revision 2) RFC 792 ICMP RFC 793 TCP RFC 826 ARP RFC 854 TELNET RFC 868 Time Protocol RFC 951 BOOTP RFC 1058 RIPv1 RFC 1350 TFTP Protocol (revision 2) RFC 2030 Simple Network Time Protocol (SNTP) v4 RFC 2131 DHCP RFC 2453 RIPv2 RFC 3046 DHCP Relay Agent Information Option</p>	<p>IPv6 RFC 1981 IPv6 Path MTU Discovery RFC 2460 IPv6 Specification RFC 2710 Multicast Listener Discovery (MLD) for IPv6 RFC 2925 Remote Operations MIB (Ping only) RFC 3019 MLDv1 MIB RFC 3315 DHCPv6 (client only) RFC 3513 IPv6 Addressing Architecture RFC 3596 DNS Extension for IPv6 RFC 3810 Multicast Listener Discovery Version 2 (MLDv2) for IPv6 RFC 4022 MIB for TCP RFC 4113 MIB for UDP RFC 4251 SSHv6 Architecture RFC 4252 SSHv6 Authentication RFC 4253 SSHv6 Transport Layer RFC 4254 SSHv6 Connection RFC 4293 MIB for IP RFC 4419 Key Exchange for SSH RFC 4443 ICMPv6 RFC 4541 IGMP & MLD Snooping Switch RFC 4861 IPv6 Neighbor Discovery RFC 4862 IPv6 Stateless Address Auto-configuration</p>	<p>Network management IEEE 802.1AB Link Layer Discovery Protocol (LLDP) RFC 2819 Four groups of RMON: 1 (statistics), 2 (history), 3 (alarm) and 9 (events) RFC 3176 sFlow ANSI/TIA-1057 LLDP Media Endpoint Discovery (LLDP-MED) SNMPv1/v2c/v3 XRMON</p> <p>QoS/CoS RFC 2474 DiffServ Precedence, including 8 queues/port RFC 2597 DiffServ Assured Forwarding (AF) RFC 2598 DiffServ Expedited Forwarding (EF) Ingress Rate Limiting</p> <p>Security IEEE 802.1X Port Based Network Access Control RFC 1492 TACACS+ RFC 2138 RADIUS Authentication RFC 2866 RADIUS Accounting Secure Sockets Layer (SSL)</p>
	<p>IP multicast RFC 3376 IGMPv3 (host joins only)</p>	<p>MIBs RFC 1213 MIB II RFC 1493 Bridge MIB RFC 1724 RIPv2 MIB RFC 2021 RMONv2 MIB RFC 2613 SMON MIB RFC 2618 RADIUS Client MIB RFC 2620 RADIUS Accounting MIB RFC 2665 Ethernet-Like-MIB RFC 2668 802.3 MAU MIB RFC 2674 802.1p and IEEE 802.1Q Bridge MIB RFC 2737 Entity MIB (Version 2)</p>	

HP 2620 Switch Series

Specifications (continued)



HP 2620-48 Switch (J9626A)



HP 2620-48-PoE+ Switch (J9627A)

Ports	<p>48 autosensing 10/100 ports (IEEE 802.3 Type 10BASE-T, IEEE 802.3u Type 100BASE-TX); Media Type: Auto-MDIX; Duplex: half or full</p> <p>1 RJ-45 serial console port</p> <p>2 autosensing 10/100/1000 ports (IEEE 802.3 Type 10BASE-T, IEEE 802.3u Type 100BASE-TX, IEEE 802.3ab Type 1000BASE-T); Duplex: 10BASE-T/100BASE-TX: half or full; 1000BASE-T: full only</p> <p>2 open mini-GBIC (SFP) slots</p>	<p>48 RJ-45 autosensing 10/100 PoE+ ports (IEEE 802.3 Type 10BASE-T, IEEE 802.3u Type 100BASE-TX, IEEE 802.3at PoE+); Media Type: Auto-MDIX; Duplex: half or full</p> <p>1 RJ-45 serial console port</p> <p>2 autosensing 10/100/1000 ports (IEEE 802.3 Type 10BASE-T, IEEE 802.3u Type 100BASE-TX, IEEE 802.3ab Type 1000BASE-T); Duplex: 10BASE-T/100BASE-TX: half or full; 1000BASE-T: full only</p> <p>2 open mini-GBIC (SFP) slots</p>
Physical characteristics		
Dimensions	10(d) x 17.44(w) x 1.73(h) in. (25.4 x 44.3 x 4.39 cm) (1U height)	14.5(d) x 17.44(w) x 1.73(h) in. (36.83 x 44.3 x 4.39 cm) (1U height)
Weight	6.48 lb. (2.94 kg), Fully loaded	11.53 lb. (5.23 kg), Fully loaded
Memory and processor		
Processor	Power PC FreeScale 8313 @ 400 MHz, 512 MB flash, 512 MB SDRAM, 4 MB flash ROM; packet buffer size: 2 MB	PowerPC FreeScale 8313 @ 400 MHz, 512 MB flash, 512 MB SDRAM, 4 MB flash ROM; packet buffer size: 2 MB
Mounting	Mounts in an EIA-standard 19 in. telco rack or equipment cabinet (hardware included); horizontal surface mounting only	Mounts in an EIA-standard 19 in. telco rack or equipment cabinet (hardware included); horizontal surface mounting only
Performance		
100 Mb Latency	IPv6 Ready Certified < 8.3 μs (LIFO)	IPv6 Ready Certified < 8.3 μs (LIFO)
1000 Mb Latency	< 2.9 μs (LIFO)	< 2.9 μs (LIFO)
Throughput	up to 13.0 million pps	up to 13.0 million pps
Routing/Switching capacity	17.6 Gbps	17.6 Gbps
MAC address table size	16000 entries	16000 entries
Environment		
Operating temperature	32°F to 131°F (0°C to 55°C)	32°F to 131°F (0°C to 55°C)
Operating relative humidity	15% to 95% @ 104°F (40°C), noncondensing	15% to 95% @ 104°F (40°C), noncondensing
Nonoperating/Storage temperature	-40°F to 158°F (-40°C to 70°C)	-40°F to 158°F (-40°C to 70°C)
Nonoperating/Storage relative humidity	15% to 90% @ 149°F (65°C), noncondensing	15% to 90% @ 149°F (65°C), noncondensing
Altitude	up to 10,000 ft. (3 km)	up to 10,000 ft. (3 km)
Acoustic	Power: 36.5 dB, Pressure: 24.5 dB	Power: 34.0 dB, Pressure: 25.3 dB
Electrical characteristics		
	Achieved Miercom Certified Green Award	Achieved Miercom Certified Green Award
Voltage	100-127/200-240 VAC	100-127/200-240 VAC
Idle power	19.4 W	29.6 W
Maximum power rating	34.4 W	448 W
PoE power		382 W
Frequency	50/60 Hz	50/60 Hz
Notes	Idle power is the actual power consumption of the device with no ports connected. Maximum power rating and maximum heat dissipation are the worst-case theoretical maximum numbers provided for planning the infrastructure with fully loaded PoE (if equipped), 100% traffic, all ports plugged in, and all modules populated.	Idle power is the actual power consumption of the device with no ports connected. Maximum power rating and maximum heat dissipation are the worst-case theoretical maximum numbers provided for planning the infrastructure with fully loaded PoE (if equipped), 100% traffic, all ports plugged in, and all modules populated. PoE power is the power supplied by the internal power supply. It is dependent on the type and quantity of power supplies and may be supplemented with the use of an external power supply (EPS).
Safety	EN 60950/IEC 60950; CAN/CSA 22.2 No. 60950; EN 60825; UL 60950	EN 60950/IEC 60950; CAN/CSA 22.2 No. 60950; EN 60825; UL 60950
Emissions	FCC Class A; VCCI Class A; EN 55022/CISPR 22 Class A	FCC Class A; VCCI Class A; EN 55022/CISPR 22 Class A
Immunity		
EN	EN 55024, CISPR 24	EN 55024, CISPR 24
ESD	IEC 61000-4-2	IEC 61000-4-2
Radiated	IEC 61000-4-3	IEC 61000-4-3
EFT/Burst	IEC 61000-4-4	IEC 61000-4-4
Surge	IEC 61000-4-5	IEC 61000-4-5
Conducted	IEC 61000-4-6	IEC 61000-4-6
Power frequency magnetic field	IEC 61000-4-8	IEC 61000-4-8
Voltage dips and interruptions	IEC 61000-4-11	IEC 61000-4-11
Harmonics	EN 61000-3-2, IEC 61000-3-2	EN 61000-3-2, IEC 61000-3-2
Flicker	EN 61000-3-3, IEC 61000-3-3	EN 61000-3-3, IEC 61000-3-3

Specifications (continued)

	HP 2620-48 Switch (J9626A)	HP 2620-48-PoE+ Switch (J9627A)
Management	command-line interface; Web browser; Telnet	command-line interface; Web browser; Telnet
Services	<p>3-year, 4-hour onsite, 13x5 coverage for hardware (HS980E)</p> <p>3-year, 4-hour onsite, 24x7 coverage for hardware (HS982E)</p> <p>3-year, 4-hour onsite, 24x7 coverage for hardware, 24x7 SW phone support and SW updates (HS987E)</p> <p>3-year, 24x7 SW phone support, software updates (HS986E)</p> <p>Installation with minimum configuration, system-based pricing (U4826E)</p> <p>Installation with HP-provided configuration, system-based pricing (U4830E)</p> <p>4-year, 4-hour onsite, 13x5 coverage for hardware (HS990E)</p> <p>4-year, 4-hour onsite, 24x7 coverage for hardware (HS992E)</p> <p>4-year, 4-hour onsite, 24x7 coverage for hardware, 24x7 software phone (HS997E)</p> <p>4-year, 24x7 SW phone support, software updates (HS996E)</p> <p>5-year, 4-hour onsite, 13x5 coverage for hardware (HT001E)</p> <p>5-year, 4-hour onsite, 24x7 coverage for hardware (HT003E)</p> <p>5-year, 4-hour onsite, 24x7 coverage for hardware, 24x7 software phone (HT008E)</p> <p>5-year, 24x7 SW phone support, software updates (HT007E)</p> <p>3 Yr 6 hr Call-to-Repair Onsite (HS984E)</p> <p>4 Yr 6 hr Call-to-Repair Onsite (HS994E)</p> <p>5 Yr 6 hr Call-to-Repair Onsite (HT005E)</p> <p>1-year, 4-hour onsite, 13x5 coverage for hardware (HS970E)</p> <p>1-year, 4-hour onsite, 24x7 coverage for hardware (HS972E)</p> <p>1-year, 6 hour Call-To-Repair Onsite for hardware (HS974E)</p> <p>1-year, 24x7 software phone support, software updates (HS976E)</p> <p>1-year, 4-hour onsite, 24x7 coverage for hardware, 24x7 software phone support and software updates (HS977E)</p> <p>1-year, 24x7 software phone support, software updates + Next Business Day Hardware Exchange (HS968E)</p> <p>1-year, 24x7 software phone support, software updates + 4 hour hardware exchange (HS969E)</p> <p>3-year, 24x7 software phone support, software updates + Next Business Day Hardware Exchange (HS978E)</p> <p>3-year, 24x7 software phone support, software updates + 4 hour Hardware Exchange (HS979E)</p> <p>4-year, 24x7 software phone support, software updates + Next Business Day Hardware Exchange (HS988E)</p> <p>4-year, 24x7 software phone support, software updates + 4 hour Hardware Exchange (HS989E)</p> <p>5-year, 24x7 software phone support, software updates + Next Business Day Hardware Exchange (HS998E)</p> <p>5-year, 24x7 software phone support, software updates + 4 hour Hardware Exchange (HS999E)</p> <p>Refer to the HP website at www.hp.com/networking/services for details on the service-level descriptions and product numbers. For details about services and response times in your area, please contact your local HP sales office.</p>	<p>3-year, 4-hour onsite, 13x5 coverage for hardware (HS980E)</p> <p>3-year, 4-hour onsite, 24x7 coverage for hardware (HS982E)</p> <p>3-year, 4-hour onsite, 24x7 coverage for hardware, 24x7 SW phone support and SW updates (HS987E)</p> <p>3-year, 24x7 SW phone support, software updates (HS986E)</p> <p>Installation with minimum configuration, system-based pricing (U4826E)</p> <p>Installation with HP-provided configuration, system-based pricing (U4830E)</p> <p>4-year, 4-hour onsite, 13x5 coverage for hardware (HS990E)</p> <p>4-year, 4-hour onsite, 24x7 coverage for hardware (HS992E)</p> <p>4-year, 4-hour onsite, 24x7 coverage for hardware, 24x7 software phone (HS997E)</p> <p>4-year, 24x7 SW phone support, software updates (HS996E)</p> <p>5-year, 4-hour onsite, 13x5 coverage for hardware (HT001E)</p> <p>5-year, 4-hour onsite, 24x7 coverage for hardware (HT003E)</p> <p>5-year, 4-hour onsite, 24x7 coverage for hardware, 24x7 software phone (HT008E)</p> <p>5-year, 24x7 SW phone support, software updates (HT007E)</p> <p>3 Yr 6 hr Call-to-Repair Onsite (HS984E)</p> <p>4 Yr 6 hr Call-to-Repair Onsite (HS994E)</p> <p>5 Yr 6 hr Call-to-Repair Onsite (HT005E)</p> <p>1-year, 4-hour onsite, 13x5 coverage for hardware (HS970E)</p> <p>1-year, 4-hour onsite, 24x7 coverage for hardware (HS972E)</p> <p>1-year, 6 hour Call-To-Repair Onsite for hardware (HS974E)</p> <p>1-year, 24x7 software phone support, software updates (HS976E)</p> <p>1-year, 4-hour onsite, 24x7 coverage for hardware, 24x7 software phone support and software updates (HS977E)</p> <p>1-year, 24x7 software phone support, software updates + Next Business Day Hardware Exchange (HS968E)</p> <p>1-year, 24x7 software phone support, software updates + 4 hour hardware exchange (HS969E)</p> <p>3-year, 24x7 software phone support, software updates + Next Business Day Hardware Exchange (HS978E)</p> <p>3-year, 24x7 software phone support, software updates + 4 hour Hardware Exchange (HS979E)</p> <p>4-year, 24x7 software phone support, software updates + Next Business Day Hardware Exchange (HS988E)</p> <p>4-year, 24x7 software phone support, software updates + 4 hour Hardware Exchange (HS989E)</p> <p>5-year, 24x7 software phone support, software updates + Next Business Day Hardware Exchange (HS998E)</p> <p>5-year, 24x7 software phone support, software updates + 4 hour Hardware Exchange (HS999E)</p> <p>Refer to the HP website at www.hp.com/networking/services for details on the service-level descriptions and product numbers. For details about services and response times in your area, please contact your local HP sales office.</p>

Specifications (continued)

HP 2620-48 Switch (J9626A)

Standards and protocols (applies to all products in series)

Device management

RFC 1591 DNS (client)
HTML and telnet management

General protocols

IEEE 802.1D MAC Bridges
IEEE 802.1p Priority
IEEE 802.1Q VLANs
IEEE 802.1s Multiple Spanning Trees
IEEE 802.1v VLAN classification by Protocol and Port
IEEE 802.1w Rapid Reconfiguration of Spanning Tree
IEEE 802.3ad Link Aggregation Control Protocol (LACP)
IEEE 802.3x Flow Control
RFC 768 UDP
RFC 783 TFTP Protocol (revision 2)
RFC 792 ICMP
RFC 793 TCP
RFC 826 ARP
RFC 854 TELNET
RFC 868 Time Protocol
RFC 951 BOOTP
RFC 1058 RIPv1
RFC 1350 TFTP Protocol (revision 2)
RFC 2030 Simple Network Time Protocol (SNTP) v4
RFC 2131 DHCP
RFC 2453 RIPv2
RFC 3046 DHCP Relay Agent Information Option

IP multicast

RFC 3376 IGMPv3 (host joins only)

HP 2620-48-PoE+ Switch (J9627A)

IPv6

RFC 1981 IPv6 Path MTU Discovery
RFC 2460 IPv6 Specification
RFC 2710 Multicast Listener Discovery (MLD) for IPv6
RFC 2925 Remote Operations MIB (Ping only)
RFC 3019 MLDv1 MIB
RFC 3315 DHCPv6 (client only)
RFC 3513 IPv6 Addressing Architecture
RFC 3596 DNS Extension for IPv6
RFC 3810 Multicast Listener Discovery Version 2 (MLDv2) for IPv6
RFC 4022 MIB for TCP
RFC 4113 MIB for UDP
RFC 4251 SSHv6 Architecture
RFC 4252 SSHv6 Authentication
RFC 4253 SSHv6 Transport Layer
RFC 4254 SSHv6 Connection
RFC 4293 MIB for IP
RFC 4419 Key Exchange for SSH
RFC 4443 ICMPv6
RFC 4541 IGMP & MLD Snooping Switch
RFC 4861 IPv6 Neighbor Discovery
RFC 4862 IPv6 Stateless Address Auto-configuration

MIBs

RFC 1213 MIB II
RFC 1493 Bridge MIB
RFC 1724 RIPv2 MIB
RFC 2021 RMONv2 MIB
RFC 2613 SMON MIB
RFC 2618 RADIUS Client MIB
RFC 2620 RADIUS Accounting MIB
RFC 2665 Ethernet-Like-MIB
RFC 2668 802.3 MAU MIB
RFC 2674 802.1p and IEEE 802.1Q Bridge MIB
RFC 2737 Entity MIB (Version 2)

RFC 2863 The Interfaces Group MIB
RFC 2925 Ping MIB

Network management

IEEE 802.1AB Link Layer Discovery Protocol (LLDP)
RFC 2819 Four groups of RMON: 1 (statistics), 2 (history), 3 (alarm) and 9 (events)
RFC 3176 sFlow
ANSI/TIA-1057 LLDP Media Endpoint Discovery (LLDP-MED)
SNMPv1/v2c/v3
XRMON

QoS/CoS

RFC 2474 DiffServ Precedence, including 8 queues/port
RFC 2597 DiffServ Assured Forwarding (AF)
RFC 2598 DiffServ Expedited Forwarding (EF) Ingress Rate Limiting

Security

IEEE 802.1X Port Based Network Access Control
RFC 1492 TACACS+
RFC 2138 RADIUS Authentication
RFC 2866 RADIUS Accounting
Secure Sockets Layer (SSL)

HP 2620 Switch Series accessories

Transceivers

HP X121 1G SFP LC SX Transceiver (J4858C)
HP X121 1G SFP LC LX Transceiver (J4859C)
HP X121 1G SFP LC LH Transceiver (J4860C)
HP X121 1G SFP RJ45 T Transceiver (J8177C)
HP X111 100M SFP LC FX Transceiver (J9054C)
HP X112 100M SFP LC BX-D Transceiver (J9099B)
HP X112 100M SFP LC BX-U Transceiver (J9100B)
HP X122 1G SFP LC BX-D Transceiver (J9142B)
HP X122 1G SFP LC BX-U Transceiver (J9143B)

Cables

HP 0.5 m Multimode OM3 LC/LC Optical Cable (AJ833A)
HP 1 m Multimode OM3 LC/LC Optical Cable (AJ834A)
HP 2 m Multimode OM3 LC/LC Optical Cable (AJ835A)
HP 5 m Multimode OM3 LC/LC Optical Cable (AJ836A)
HP 15 m Multimode OM3 LC/LC Optical Cable (AJ837A)
HP 30 m Multimode OM3 LC/LC Optical Cable (AJ838A)
HP 50 m Multimode OM3 LC/LC Optical Cable (AJ839A)
NEW HP 0.5 m PremierFlex OM3+ LC/LC Optical Cable (BK837A)
NEW HP 1 m PremierFlex OM3+ LC/LC Optical Cable (BK838A)
NEW HP 2 m PremierFlex OM3+ LC/LC Optical Cable (BK839A)
NEW HP 5 m PremierFlex OM3+ LC/LC Optical Cable (BK840A)
NEW HP 15 m PremierFlex OM3+ LC/LC Optical Cable (BK841A)

NEW HP 30 m PremierFlex OM3+ LC/LC Optical Cable (BK842A)

NEW HP 50 m PremierFlex OM3+ LC/LC Optical Cable (BK843A)

Mounting Kit

HP X410 1U Universal 4-post Rack Mounting Kit (J9583A)

HP 2620-24 Switch (J9623A)

HP 600 Redundant and External Power Supply (J8168A)

HP 2620-24-PPoE+ Switch (J9624A)

HP 600 Redundant and External Power Supply (J8168A)

HP 2620-24-PoE+ Switch (J9625A)

HP 630 Redundant and/or External Power Supply (J9443A)

HP 620 Redundant/External Power Supply (J8696A)

HP 2620-48 Switch (J9626A)

HP 600 Redundant and External Power Supply (J8168A)

HP 2620-48-PoE+ Switch (J9627A)

HP 630 Redundant and/or External Power Supply (J9443A)

HP 620 Redundant/External Power Supply (J8696A)



Products within this series have achieved sufficient scores in each of the rated criteria to achieve the Miercom Certified Green distinction Award. See the Specifications section of this series for more information.

Products within this series are IPv6 Ready certified. See the Specifications section of this series for more information.

To learn more, visit www.hp.com/networking

© Copyright 2011 Hewlett-Packard Development Company, L.P. The information contained herein is subject to change without notice. The only warranties for HP products and services are set forth in the express warranty statements accompanying such products and services. Nothing herein should be construed as constituting an additional warranty. HP shall not be liable for technical or editorial errors or omissions contained herein.

4AA3-7117ENW, Created September 2011

