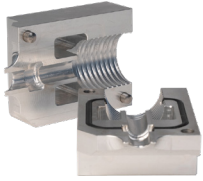


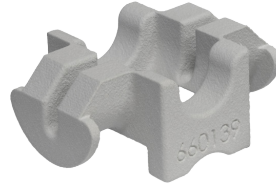
# V3 Accessories



V2 Duct Clamps



After Blower



V3 Cable Guide



Cleaning Sponges



Lube & Pneumatic Oil



Working Table



Floating Kit



Drive Belts



JetDrum K12



JetDrum K8



Cable Heads



Cable Seals

# V3 Accessories

Ordering Information	
Product Description	Part Number
Duct clamp 10-CD8 (Cable seal Ø 16mm)	V3-10-8
Duct clamp 12-CD10 (Cable seal Ø 16mm)	V3-12-10
Duct clamp 14-CD10 (Cable seal Ø 16mm)	V3-14-10
Duct clamp 12.7-CD10 (Cable seal Ø 16mm)	V3-12.7-10
Duct clamp 16-CD13.5 Dual seal (Cable seal Ø 16mm and 22mm)	V3-16-13,5-16/22
Duct clamp 18-CD13.5 Dual seal (Cable seal Ø 16mm and 22mm)	V3-18-13,5-16/22
Duct clamp 20-CD10 (Cable seal Ø 16mm)	V3-20-10
Duct clamp 20-CD16 (Cable seal Ø 22mm)	V3-20-16
Duct clamp 25-CD13.5 Dual seal (Cable seal Ø 16mm and 22mm)	V3-25-13,5-16/22
Duct clamp 25-CD16 (Cable seal Ø 22mm)	V3-25-16
Duct clamp 26.3-CD13.5 Dual seal (Cable seal Ø 22 mm and 28mm)	V3-26.3-13.5-22/28
Duct clamp 26.3-CD16 (Cable seal Ø 22mm)	V3-26.3-16-22
Duct clamp 32-CD10 (Cable seal Ø 16mm)	V3-32-10
Duct clamp 32-CD20 Dual seal (Cable seal Ø 22mm and 28mm)	V3-32-20-22/28
Duct clamp 32-CD23 (Cable seal Ø 28mm)	V3-32-23
Duct clamp 33.3-CD20 Dual seal (Cable seal Ø 22mm and 28mm)	V3-33.3-20-22/28
Duct clamp 40-CD10 (Cable seal Ø 16mm)	V3-40-10
Duct clamp 40-CD16 (Cable seal Ø 22mm)	V3-40-16
Duct clamp 40-CD20 Dual seal (Cable seal Ø 22mm and 28mm)	V3-40-20-22/28
Duct clamp 40-CD23 (Cable seal Ø 28 mm)	V3-40-23
Duct clamp 42.2-CD16 (Cable seal Ø 22 mm)	V3-42,2-16-22
Duct clamp 42.2-CD20 Dual seal (Cable seal Ø 22 and 28 mm)	V3-42,2-20- 22/28
Duct clamp 42.2-CD23 (Cable seal Ø 28mm)	V3-42,2-23-28
Duct clamp 48-CD20 Dual seal (Cable seal Ø 22mm and 28mm)	V3-48-20-22/28
Duct clamp 48-CD23 (Cable seal Ø 28mm)	V3-48-23
Duct clamp 50-CD10 (Cable seal Ø 16mm)	V3-50-10
Duct clamp 50-CD20 Dual seal (Cable seal Ø 22mm and 28mm)	V3-50-20-DS
Duct clamp 50-CD23 (Cable seal Ø 28mm )	V3-50-23
Duct clamp 50-CD33 (Cable seal Ø 47mm )	V3-50-33
Duct clamp 60-CD23 (Cable seal Ø 28mm)	V3-60.3-23-28
Duct clamp 60-CD33 (Cable seal Ø 47mm)	V3-60.3-33-47
Duct clamp 63-CD23 (Cable seal Ø 28mm)	V3-63-23

# V3 Accessories

Ordering Information			
Product Description			Part Number
Cable Seals (1 pack = 10 pcs)	Yellow	16-2.5mm	662016-2.5
	Yellow	16-2.8mm	662016-2.8
	Yellow	16-3.0mm	662016-3
	Yellow	16-4.0mm	662016-4
	Yellow	16-5.0mm	662016-5
	Yellow	16-6.0mm	662016-6
	Yellow	16-7.0mm	662016-7
	Yellow	16-8.0mm	662016-8
	Yellow	16-9.0mm	662016-9
	Green	22-10.0mm	662022-10
	Green	22-11.0mm	662022-11
	Green	22-12.0mm	662022-12
	Green	22-13.0mm	662022-13
	Green	22-14.0mm	662022-14
	Green	22-15.0mm	662022-15
	Blue	28-16.0mm	662028-16
	Blue	28-17.0mm	662028-17
	Blue	28-18.0mm	662028-18
	Blue	28-19.0mm	662028-19
	Blue	28-20.0mm	662028-20
Blue	28-21.0mm	662028-21	
Cabel seal divisible (O.D. 47mm)	21mm		CSD21-47
	22mm		CSD22-47
	23mm		CSD23-47
	24mm		CSD24-47
	25mm		CSD25-47
	26mm		CSD26-47
	27mm		CSD27-47
	28mm		CSD28-47
	29mm		CSD29-47
Feeding Belt Kit, 1 Top & 1 Bottom			11054
Feeding Belt Kit HD Orange, 1 Top & 1 Bottom			11051
Aluminium Rear Guide 34mm (Pair) [2 Pairs Needed]			13049A
Aluminium Rear Guide 26mm (Pair) [2 Pairs Needed]			13042A
Aluminium Rear Guide 22mm (Pair) [2 Pairs Needed]			13040A
Aluminium Rear Guide 15mm (Pair) [2 Pairs Needed]			13039A
Aluminium Rear guide 12mm (Pair) [2 Pairs Needed] (included with machine)			13030A
V3 Kit for "Double Claw" Pipe Holder			661330

# V3 Accessories

Ordering Information		
Pneumatic Jetting 1L Oil32		1030
Foldable Cable Drum Rack Jetting 1pc 1200mm		18000
9-12 V Adaptor for MJet V1/V2/V3		13045
After Blower for V3 Duct Clamps		18005
Floating Kit for MJet V1/V2/V3 8mm		39005
Floating Kit for MJet V3 HD 10mm		39006
O-Ring Between Clamp and Block Mjet V3		33087
O-Ring Between Clamp and Block Mjet V3 HD		33076
O-String Seal for Clamp and Y-Block 1m		660148
Jetting Working Table		661407
Jetluber With USA/NA Air Connector		JETLUBER
Clamp Dock for V3 Prepared for JetLuber		660748
V3 Extended Warranty		660794
After Blower for V3 duct clamps		18005
Jetting Working table		661407
Rod Pusher Accessories	Cart for V3	JETTING CART
	Rod Guide	661300
	Rod Guide Hose 1.5m	660718
	Rod Guide Hose 3.0m	660719
	Rod Guide Hose 5.0m	660720
Seal for Rodguide (Cleaning the Rod)	Glasfiber Rod Ø 11mm	CSD10-35
	Glasfiber Rod Ø 12mm	CSD11-35
	Glasfiber Rod Ø 13mm	CSD12-35
	Glasfiber Rod Ø 14mm	CSD13-35
	Glasfiber Rod Ø 15mm	CSD14-35
	Glasfiber Rod Ø 16mm	CSD15-35
	Glasfiber Rod Ø 17mm	CSD16-35
Cleaning Plugs (Sponges) Inner Diameter Duct (mm):	3.5-5 (50 pcs)	CP3.5-5
	7.0-11 (50 pcs)	CP7-11
	8.0-12 (50 pcs)	CP8-12
	14-21 (10 pcs)	CP14-21
	17.5-27 (10 pcs)	CP17.5-27
	22-35 (10 pcs)	CP22-35
	25-40 (10 pcs)	CP25-40
	27-45 (10 pcs)	CP27-45
	32-55 (10 pcs)	CP32-55

# V3 Accessories

Ordering Information		
Cable Heads (From 2.5mm Treaded)	1.4 (10 pcs)	CH-1.4
	1.8 (10 pcs)	CH-1.8
	2.0 (10 pcs)	CH-2
	2.2 (10 pcs)	CH-2.2
	2.5 (10 pcs)	CH-2.5
	3.0 (10 pcs)	CH-3
	3.5 (10 pcs)	CH-3.5
	4.0 (10 pcs)	CH-4
	4.5 (10 pcs)	CH-4.5
	5.0 (10 pcs)	CH-5
	5.5 (10 pcs)	CH-5.5
	6.0 (10 pcs)	CH-6
	6.5 (10 pcs)	CH-6.5
	7.0 (10 pcs)	CH-7
	7.5 (10 pcs)	CH-7.5
	8.0 (10 pcs)	CH-8
	8.5 (10 pcs)	CH-8.5
	9.0 (10 pcs)	CH-9
	10 (10 pcs)	CH-10
	11 (10 pcs)	CH-11
12 (10 pcs)	CH-12	
13 (10 pcs)	CH-13	
14 (10 pcs)	CH-14	
15 (10 pcs)	CH-15	
16 (10 pcs)	CH-16	
17 (10 pcs)	CH-17	
18 (10 pcs)	CH-18	
19 (10 pcs)	CH-19	
20 (10 pcs)	CH-20	