

AX-S™ Concrete Infill

Frame & Cover B125

915mm x 445mm

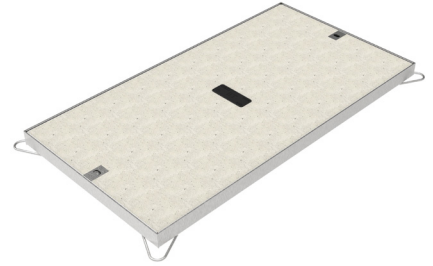


Product Description

AX-S™ Concrete Infill covers can be manufactured to suit an extensive range of clear openings, an industry favourite for their simplicity and ease of use.

Frame Details

Clear Opening:	916mm x 446mm	Including Riser:	N/A
External Dimensions:	1008mm x 538mm	Crosspiece(s):	N/A
Depth:	52mm	Weight:	6.5kg



Cover Details

Cover Type:	1 x 1000mm x 530mm
Weight:	64kg

Overall Details

Product Code:	FCCIMP-09150445-00*0*B**1
Total Weight:	71kg

Installation

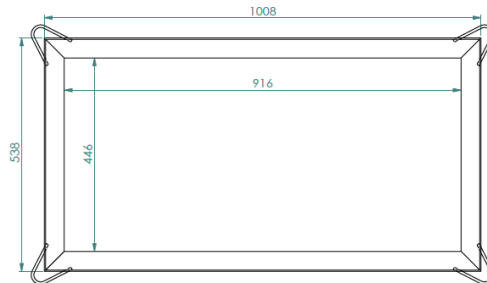
The product is designed for use in both footway and roadway installations where it provides access to underground ducting (EN124 Class A15-B125).

Key Features

- Easy slide out covers
- No inherent scrap value
- Anti-slip surface



Scan for access to technical documents library



Concrete Infill cross-section top view



Concrete Infill cross-section detail

FCCI-915x445-B V.02 20/02/2020