

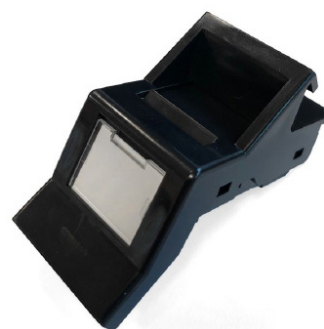
Connectix Cabling Systems™

Angled Shuttered Keystone Euro Fascia

The Connectix Shuttered Keystone Euro Fascia is compatible with Cat5e, Cat6 and Cat6a keystone modules. One fascia is required for each module used in a faceplate. They have been designed to be used with most Euro Module Keystone.

Features and Benefits

- Quick and easy to install
- Easy to use reinsertion label
- Snap-fit to terminate
- Suitable for all standard Keystone applications
- Compact design
- Fits the range of Connectix Faceplates



Specifications - Euro Module	
Width	25 mm
Overall Depth	32.5 mm
Mounting Depth	23.5 mm
Height	50 mm
Material	Flame retardant Polycarbonate/ABS thermoplastic resin

Ordering Information

Product Description	Part Number
Connectix Angled Shuttered Euro module Fascia White	008-010-010-18
Connectix Angled Shuttered Euro module Fascia Black	008-010-010-19