



## 28-Port Gigabit Web Smart PoE Switch TPE-224WS

TPE-224WS 28-port Smart Switch integrates Power over Ethernet (PoE) and network management features into a cost effective and scalable solution. The TPE-224WS reduces equipment cost by delivering data and power over existing network cable infrastructure. The switch offers advanced network management features such as VLAN and QoS to meet today's secured network applications.

### FEATURES

- IEEE 802.3af Power over Ethernet (PoE) Standard Compliant
- 24 x 10/100Mbps Auto-Negotiation and Auto-MDIX Fast Ethernet PoE RJ-54 Ports
- 4 x 10/100/1000Mbps Auto-Negotiating and Auto-MDIX Gigabit Ports
- 2 x 1000Base-SX/LX Mini-GBIC Slots for Optional Mini-GBIC Modules
- Supports PoE Power up to 15.4 watts for each PoE port
- Supports PoE Power maximum up to 170 watts for all PoE ports
- Supports PoE Powered Device(PD) classification identify
- Full Wire-Speed Non-Blocking Reception and Transmission
- Store and Forward Switching Method
- 1Mits RAM Data Buffer and 8K entries MAC Address Table
- Extensive Diagnostic LED's on the Front Panel
- Proprietary Windows Based Management/Monitoring Utility (similar to SNMP Trap)
- Supports 802.1Q VLAN (VID 1 ~ 4094), IGMP Snooping, Trunking and Port Mirroring
- Port Setting Function, Users can set each Port's Availability, Speed, Duplex Mode, and Flow Control
- Easy configuration via Web browser
- Standard 19" (1U) Rack-Mount size (kit included)
- 5-Year Warranty

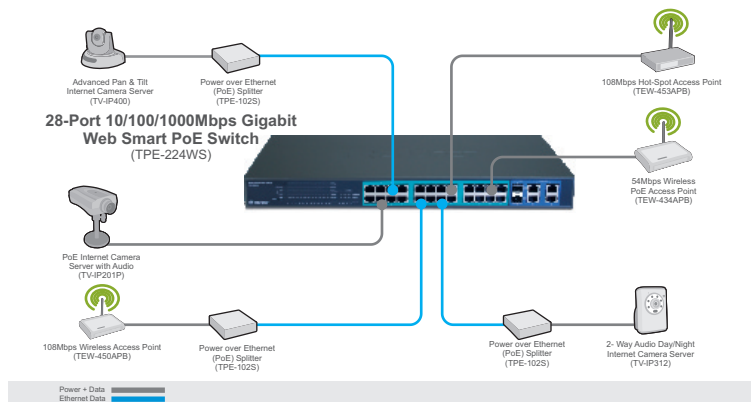
# 28-Port Gigabit Web Smart PoE Switch

## TPE-224WS

### SPECIFICATIONS

Hardware	
Standard	• IEEE 802.3 10Base-T • IEEE802.3u 100Base-TX • IEEE 802.3ab 1000base-T • IEEE 802.3af Power over Ethernet
Network Media	• 10BASE-T: 2-pair UTP Cat. 3, 4, 5; up to 100m • 100BASE-TX: 2-pair UTP Cat. 5, 5E; up to 100m • 1000BASE-T: 4-pair UTP Cat. 5, 5E, 6; up to 100m • PoE: 4-pair UTP Cat. 5; up to 100m
Protocol / Topology	• CSMA/CD ; Star
Ports	• 24 x 10/100Mbps Auto-MDIX PoE Ports • 2 x 10/100/1000Mbps Auto-MDIX Gigabit Ports • 2 x 1000Base-SX/LX Mini GBIC ports for optional Mini-GBIC modules (share with port 25,26)
Data Transfer Rate	• Ethernet: 10/20Mbps (half/full duplex) • Fast Ethernet: 100/200Mbps (half/full duplex) • Gigabit: 2000Mbps (full duplex)
RAM Buffer / Filtering	• 1Mits / 8K entry per device
Power	• 100~240VAC 50/60Hz, Internal Universal Switching Power Supply
Diagnostic LEDs	• Per Unit: Power, System • Per Port: Link/Activity, Speed • PoE: PoE status
Power Consumption (170w max for PoE)	• 26.5 watts max (no PD Device connected) • 196.5 watts max (11 x 15.4 watts PoE Device connected)
Temperature	• Operating: 0° ~ 40° C (32° ~ 104°F); Storage: -10° ~ 70° C (14° ~ 158°F)
Humidity	• 10%- 90% (non-condensing)
Dimensions	• 440 x 310 x 44 mm (17.3 x 12 x 1.73 inch) (W x H x D)
Weight	• 4.43kg (9.75 lbs)
Certification	• FCC, CE
PoE	
Power over Ethernet	• Up to 15.4 watts per Port; Max 170W for all PoE ports • PD classification Identify; Manual setting for PoE power limitation • Supports PoE priority setting; PoE over current protection • PoE circuit sorting protection • PoE power on RJ-45 pin 3,6 for Power+ and pin 1,2 for Power

### NETWORKING SOLUTIONS



### PACKAGE CONTENTS

- TPE-224WS
- Multi-Language User's Guide
- Web-Smart Utility CD-ROM
- Power Supply
- Rack Mount Kit

### RELATED PRODUCTS

TPE-101I	Power over Ethernet (PoE) Injector
TPE-102S	Power over Ethernet (PoE) Splitter
TPE-S88	16-Port 10/100Mbps Web Smart PoE Switch

### ORDERING INFORMATION

**TRENDnet**

20675 Manhattan Place, Torrance, CA 90501 USA

Tel: 1-310-961-5500

Fax: 1-310-961-5511

Web: [www.trendnet.com](http://www.trendnet.com)

Email: [sales@trendnet.com](mailto:sales@trendnet.com)

To Order Please Call:

**1-888-326-6061**

