



Outdoor Access Point

The WND930 Outdoor Access Point is a dual band concurrent 802.11n Outdoor Access Point that combines high power, optimal high gain antennas, and an industrial grade enclosure for optimal outdoor deployment. The WND930 Outdoor Access Point is powered by redundant dual Power over Ethernet (PoE) gigabit ports as well as the capability to power other PoE devices. The WND930 Outdoor Access Point operates under harsh environment with its industrial grade IP-67 enclosure and an embedded heater to allow the Access Point to operate in below freezing point temperature. The WND930 Outdoor Access Point is ideal for hotels, resorts, schools, multi-dwelling apartments, and other locations needing high throughput, high capacity outdoor coverages. The WND930 Outdoor Access Point can operate either as a point-to-point mesh link between remote locations or as an Access Point providing coverages for users. As with all NETGEAR wireless products, the WND930 Outdoor Access Point is designed with an easy setup for a reliable, high performance and affordable total cost of ownership.

Features

High powered for super coverage

- Up to 500 mW of RF output power combine with high gain (8 dBi) dual band internal antenna to maximize coverage
- High receive sensitivity (up to -90 dBm) to optimally balance uplink and downlink

Industrial grade enclosure to operate in harsh environment

- Ingress Protection marking of IP-67 rated to operate in extreme environment
- Embedded heater automatically activate to allow proper operation in below freezing temperature

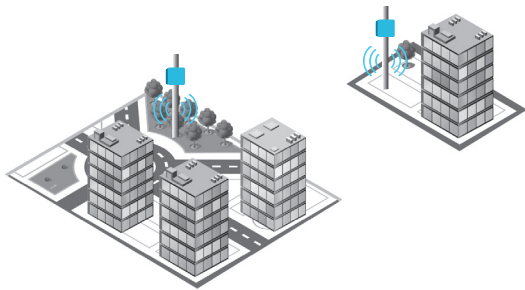
Flexible Power over Ethernet choices to maximize redundancy and deployment options

- Dual gigabit Ethernet ports with redundancy to enable AP to continue to operate in the case of intermittent power failure
- PoE power sourcing (PSE) to power other PoE devices such as surveillance cameras directly from the WND930 Outdoor Access Point

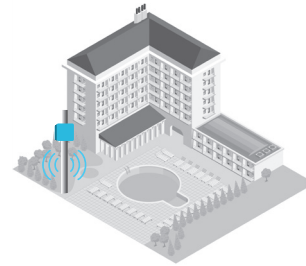
Flexible deployment options for a variety of applications

- Flexible deployment models including point to point mesh with embedded high gain directional antenna and access point mode with external antenna option
- Robust wall mounting and pole mounting kits for flexible deployment options

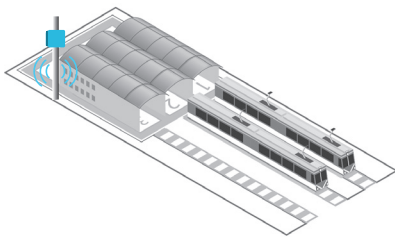
Target Applications



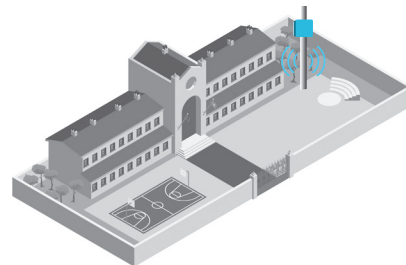
Outdoor coverage around office buildings and meshing to a remote location



Coverage around swimming pools in hotels



Wireless coverage in train stations and other public areas



Wireless coverage for school parking lots and sports complexes



IP-67 rated high powered dual band access point



Flexible mounting option with pole mount



WND930 Outdoor Access Point with external antennas to provide hotspot coverage



PoE powered with 2 redundant gigabit port and one PoE (PSE) gigabit port



Wall mounting and pole mounting kit with water-tight Ethernet cable coupler



External omni antennas sold as optional accessory kit

Technical Specifications

Physical Characteristics

Power

Power over Ethernet (802.3af or 802.3at)
2 ports 802.3af or 1 port of 802.3at for AP operation
2 ports of 802.3at for concurrent AP and PoE PSE operations

Physical Dimensions

Dimensions (LxWxH)
255x225x78 mm
10 x10x3 in

Weight

1894 kg (67 oz)

Mounting

Wall mount/pole mount kit included

Interfaces and Indicators

Physical Interface

Two (10/100/1000Base-T Ethernet (RJ-45) port with Auto Uplink™ (Auto MDI-X) with PoE PD (Power over Ethernet In)
One (10/100/1000Base-T Ethernet (RJ-45) port with Auto Uplink™ (Auto MDI-X) with PoE PSE (Power over Ethernet Out)

External Antenna Connectors

Two connectors for 2.4GHz antennas
Type N connector (female)
Two connectors for 5GHz antennas
Type N connector (female)

LEDs

Power, Activity, 2.4GHz, 5GHz, Heater

Default Reset Button

Environmental Conditions

Operating Temperature

-4° to 140° F
(-20° to 60° C)

Storage Temperature

-40° to 176° F
(-40° to 80° C)

Operating Relative Humidity

Minimum 10%
Maximum 90%

Storage Humidity

Minimum 5%
Maximum 95%

MTBF

@ 25°C > 10,45K hours
@ 60°C > 290,000 hours

Ingress Protection Marking

IP-67 rated

Power Consumption

15.2 W max (heater off, no PoE out)
25.1 W max (heater on, no PoE out)
33.9 W max (heater off, PoE out)
43.8 W max (heater on, PoE out)

RF Characteristics

Standards

IEEE 802.11n 2.0 specification
IEEE 802.11g
IEEE 802.11b
IEEE 802.11a

Frequency Band

2.4GHz and 5GHz dual band concurrent operation

Maximum RF Power Output (country dependent)

27 dBm (500 mW) 2.4GHz
26 dBm (400 mW) 5GHz

Maximum Theoretical Throughput

300 Mbps (2.4GHz)
300 Mbps (5GHz)

Antenna Gain

8 dBi (2.4GHz)
8 dBi (5GHz)

Network Management

Standalone
Centralized management (future)

Advanced Wireless Modes

WDS Point-to-point wireless bridge mode
Wireless Access point mode

Security

Wired Equivalent Privacy (WEP) Encryption
WiFi Protected Access Pre-shared Key (WPA-PSK, WPA2-PSK)
MAC address filtering
1 BSSID

802.11e WMM

Wireless multimedia mode for QoS

Package Contents

- Outdoor High Power Wireless N Access Point
- Wall mounting bracket
- Pole mount clamps
- Weatherproof cable glands
- Installation guide
- Warranty/support information card

Warranty and Support

Warranty

NETGEAR 2-year warranty

Safety Certification

ITU-T K.21

Optional Support

PMB0351: 5 years OnCall 24x7
PMB0331: 3 years OnCall 24x7
PMB0311: 1 year OnCall 24x7
PRR0351: 5 years XPressHW
PRR0331: 3 years XPressHW

Product Ordering Information

- WND930-10000S
High Powered Dual Band Outdoor 802.11n Wireless Access Point
- WND930-100NAS
High Powered Dual Band Outdoor 802.11n Wireless Access Point (US)
- ANT24501B-10000S
External antenna bundles (2 x 2.4GHz and 2 x 5GHz)